



PATEAR, INTONAZIONE  
TERRAIN, LOB, ODSKOCIT  
DRIBBELIN, **EXPORT**, BO  
FUSSBALLPLATZ, PROS  
LINE, TONO, BAT, HFR  
PRALLEN, SOCCOER, BO  
AT, REBOND, WERFEN,



**WHATEVER YOUR  
GAME, PLAY IT  
WITH PLAYRITE.**

**playrite**  
Specialist  
Surfaces for Sport and Leisure



## A natural **alternative** to artificial grass.

Playrite is a division of the National Floorcoverings group, which branched out 25 years ago to specialise in the development, design and manufacture of surfaces for sports and leisure.

Uniquely positioned as the only manufacturer of all three types of artificial surfaces; Tufted, Woven and Needle-punch, Playrite are the only company within the sports industry that can offer totally impartial advice on the type of surface to suit your needs.



## Content

COMPANY VALUES.....	PAGE TWO
CONTENT.....	PAGE THREE
MANUFACTURING PROCESS.....	PAGE FOUR
OUR GLOBAL EXPORTS.....	PAGE FIVE
<b>TENNIS SURFACES.....</b>	<b>PAGE SIX</b>
MATCHCLAY.....	PAGE SEVEN
CLAYRITE MF.....	PAGE EIGHT
GRANDPLAY.....	PAGE NINE
MATCHPLAY 2.....	PAGE TEN
INSTALLATION.....	PAGE ELEVEN
<b>MUTLI-USE SURFACES.....</b>	<b>PAGE TWELVE</b>
MATCHWINNER VELOUR.....	PAGE THIRTEEN
MATCHPLAY 2.....	PAGE FOURTEEN
<b>CRICKET SURFACES.....</b>	<b>PAGE FIFTEEN</b>
<b>PLAY SURFACES.....</b>	<b>PAGE SIXTEEN</b>
PLAYSAFE SYSTEMS.....	PAGE SEVENTEEN
CASE STUDIES.....	PAGE EIGHTEEN
FAQ's.....	PAGE NINETEEN



# OUR MANUFACTURING PROCESS

Playrite offer a variety of surfaces to deliver multiple ball sports. This allows you to choose the best surface to suit your project. Organisations can often have very limited funding or shortage of space, which is why our surfaces are designed to provide the ideal solution. You must understand the smaller the area the heavier the wear which shortens the life of your synthetic surface.

We also manufacture Needle punch surfaces that offer a shorter pile, these are sand dressed surfaces whereby the maintenance requirement can be minimal and therefore reduces the costs. Annual maintenance is still essential to ensure your synthetic surface continues to provide playing performance.

Manufactured in the UK, whereby, great care is taken in the development and design of all Playrite's surfaces offering our customers a superior quality.



## Our expertise, your benefits

- A trusted UK manufacturer of sport, play and leisure surfaces.
- Established for over 20 years we offer choice, quality and performance.
- Playrite has ISO9001 and ISO14001 quality standards.
- Our products are accredited by sports governing bodies and EN15330 part 1 and 2.
- Our products are used across the world on a daily basis.
- Manufactured using a range of fibre options.
- Available in a range of colours including two-tone.



### Needle punch

Involves layers of fibre needled together to create a pile suited to Multi-sports. This durable and hardwearing surface, requires a minimum sand content, which reduces maintenance costs and as there is no secondary backing, increases porosity.



### Woven Surface

A Woven surface is created by weaving the backing yarn and pile yarn together as one to create a very dense pile surface. This creates a highly stable, non-directional pile which provides a consistent ball roll and lasting strength.



### Tufted

Tufted requires fibres to be punched through a primary backing to create a U shaped tuft. All tufted carpets require an infill to maintain performance. Aesthetically, it mimics a natural grass appearance and performance.



Grown from £10,000 to over £2 million in 6 years.

Over 64 containers shipped each year.

Over 5 million square metres of carpet produced every year.



Export from as close as France, to as far a field as Australia.

Playrite have been exporting sports surfaces for over 20 years. We have installations across the whole of Europe and confidence to promote our range of needlepunch sports surfaces around the world.

We remain the number one exporter of bowls carpets to Australia through our distributor Dales Sports Surfaces. All our products meet the relevant sports governing bodies requirements and where there are no standards, we carry the EN15330 performance accreditation.

Our dedicated in house export sales team are available to offer support in production, product knowledge and shipping information to make your journey with Playrite as smooth as possible.

Exported for over 20 years.

# OUR GLOBAL EXPORTS

# TENNIS SURFACES

Playrite offer a synthetic tennis surface range, which covers each of the ITF's pace ratings. This allows you to choose the best surface to suit the playing levels for your club members.

Tennis clubs often have very limited voluntary support, which is why our tennis surfaces are designed to require the minimal amount of maintenance, especially Needle-punch surfaces. Both offer short pile sand dressed surfaces that need very little brushing and periodically require sand replacement. Annual maintenance is still essential to keep your synthetic surface to its peak playing performance.

Great care is taken in the development, design and manufacturing of all Playrites tennis surfaces offering our customers a superior quality, manufactured to the highest standards in the UK.



- A trusted UK manufacturer of sport, play and leisure surfaces.
- Established for over 20 years we offer choice, quality and performance.
- Our company has ISO9001 and ISO14001 quality standards.
- Our products are accredited by sports governing bodies and British standard agencies.
- Our products are used across the world on a daily basis.
- Manufactured using a range of fibre options.
- Available in a range of colours
- ITF accredited 1-5.
- Meets EN15330 standards.



# ITF PACE RATING 1 (SLOW) MATCHCLAY

Matchclay simulates natural clay courts without the high maintenance requirements and is relatively quick and low cost to install, so provides an ideal solution for clubs wanting to continue with clay courts without extensive all year round maintenance costs.

When filled with clay the surface is classified to ITF Category 1 Slow pace. Fully adhered or loose laid, Matchclay is a cost effective solution to natural clay.

Available in 4.00m and 2.00m wide rolls, Matchclay requires only three seams per court with painted lines, it can also be installed onto existing hard court surfaces such as porous concrete or asphalt.



## Make every shot count

A unique structured needlepunch chevron pattern construction filled with natural clay, this durable tennis court surface has an additional comfort underfoot consolidating the clay into the carpet to provide a consistent ball bounce and speed, which also reduces fatigue.

---

Pile Height.....	6mm
Finish Weight.....	1500gsm
Clay Infill.....	6-8kg/sqm

---

- Needlepunch surface.
  - Mimics a natural clay court.
  - ITF pace rating (slow).
  - EN135330 Part 2 Tennis.
  - Requires regular brushing and watering.
  - Install onto existing hardcourt surfaces.
-



Contact a member of our team  
 +44 (0)1924 412488



# ITF CLASSIFICATION 1 (SLOW) CLAYRITE MF

Clayrite is a tufted monofilament or fibrillated yarn which mimics the look and play of a natural clay surface. Its sand top dressing helps provide the same ball speed and bounce as that of a traditional clay court.

Clayrite is available in 3.75m or 4m rolls to help minimise waste. The sand filled tufted surface provides year round usage, maximising playing time and increasing revenue for your club.



## Make every shot count

Clayrite is the complete artificial alternative to our Matchclay surface having a sand filled system and can be installed onto existing or new hard porous courts, seamed with all lines tufted into the surface.

Pile Height.....	13mm
Finish Weight.....	1870gsm / 2160gsm
Stitches.....	37,800/ 44,1000
Red Sand Infill.....	17-19 kg/sqm (0.71mm - 0.25mm min 80% rounded)

- Tufted surface.
- Mimics a natural clay court.
- ITF pace rating 1 (slow).
- EN135330 Part 1 Tennis.
- Install onto existing hardcourt surfaces.





# ITF CLASSIFICATION 4 (MEDIUM SLOW) GRANDPLAY

Suited for high level tennis players who want a faster pace, Grandplay is a monofilament polyethylene texturised yarn surface. Its unique surface provides unrivalled durability and performance.

Grandplay has been designed on a 3/16 gauge to create a uniformed tuft density, which simulates a natural grass court with a positive grip underfoot, making it the preferred choice for many clubs.



**Our most popular tennis surface**  
While maintenance is minimal, a maintenance plan must still be in place for any tufted tennis surface. It is available in two tone green and terracotta and lines are tufted into the surface during manufacturing.

- Tufted, sand dressed surface.
- Offers optimum durability and performance.
- ITF pace rating 4 (medium/fast).
- EN15330 Part 2 Tennis.



# ITF CLASSIFICATION 3 (MEDIUM) MATCHPLAY 2

Matchplay 2 is an ideal all round club level choice due to its high performance and durability. The needlepunch dimpled pattern construction is sand dressed with 5-8Kgs of sand, which does not compact and therefore requires occasionally brushing.

Available in a range of colours, Matchplay 2 is ideal for coaching due to its consistent ball bounce and high porosity level which allows all weather usage, maximising playing time.



**Make every shot count**  
The built in cushion layer makes for medium-paced play and is ideal for overlaying on existing tired or worn courts. Older club members are also able to play more regularly on this cushioned surface than on a sand filled or hard porous court.

- Needlepunch, sand dressed surface.
- Unique hardwearing profile.
- High porosity rating.
- ITF pace rating 3 (medium).
- EN15330 Part 2 Tennis.
- Choice of colours available.

# TENNIS SURFACE INSTALLATION

Playrite Tennis Surfaces are designed to be as installation friendly as possible.

Comprehensive instructions can be viewed via our website, but we always recommend that our products are fitted by a professional to ensure you get the best from your surface. These images show the basic installation stages involved.



1\_Layout



2\_Seaming



3\_In Laid Line



4\_In Laid Line



5\_Awaiting Sanding



6\_Sanding



7\_Sanding



8\_Pace Testing





Tournament 18



Matchplay 2



Matchwinner Velour



Champion 24



# SAVE, PITCH, TACKLE, BACKHAND, CORNER, MULTI-USE SURFACES

Many of our multi-sports synthetic surfaces have been installed into schools, universities and sports clubs throughout the country and are an excellent choice when an organisation needs to get the most out of their facilities.

We currently manufacture a range of highly accredited sports and playing surfaces, each one offering a highly engineered surface.

By choosing a multi-use games area for your facility, you can offer a wider range of sports and extra-curricular activities. All available with a manufacturer's warranty as well as a UV warranty.



**Multi Use Game Areas (MUGA)** are the perfect solution when faced with a shortage of space or limited funds, Available from Playrite in both needlepunch and tufted construction.

### Our expertise, your benefits

- Versatile and hard wearing.
- Manufactured in a range of fibre options to suit.
- Available in a range of colours.
- All meet EN15330 standards.
- Meet various governing body accreditations.
- CAD visualisation of pitch and line markings available.
- Products available: Matchplay 2, Matchwinner Velour, Champion 24, Tournament 18.
- Optional shockpads available.



# MULTI-USE MATCHWINNER VELOUR

Matchwinner Velour is a sand dressed needlepunch surface designed with a random pile which benefits various ball sports that require a medium to low ball bounce.

Available in 14 different colours, Matchwinner Velour enables designs to be inset into the surface which is ideal for primary spaces to make the area bright and bold.

Matchwinner Velour can be installed directly onto tarmac or equally with a Playrite shockpad to prolong the life and performance of the surface. Meets the **EN15330** Part 2 standards.



**Benefiting ball sports** are the perfect solution when faced with a shortage of space or limited funds, Available from Playrite in both needlepunch and tufted construction.

- Available in 14 colours
- Install onto existing hardcourt surfaces
- Needlepunch Surface
- Sand Filled

**Suitable for...**



Football



Hockey



Basketball



# MULTI-USE MATCHPLAY 2

Playrite's Matchplay 2 synthetic grass surface is our most popular sports surface specifically for schools in multi-use games areas as it ticks so many boxes for so many different sports. Available in a range of colours, Matchplay 2 will maximise your playing time due to its low sand content which allows for all weather usage.

Matchplay 2 can be fitted directly onto tarmac or equally with a Playrite shockpad to improve safety and longevity in the life of the surface.

Matchplay 2 is the only synthetic grass type surface that meets the **netball standards** and has been recognised by **Sport England** for that reason; it also carries a test certificate for ITF (tennis) as well as conforming to **EN15330** part 2 for multi-sport.



An ideal choice for multi-sports are the perfect solution when faced with a shortage of space or limited funds, Available from Playrite in both needlepunch and tufted construction.

- EN15330 Part 2
- Needlepunch
- Ideal for Netball/Tennis
- ITF Pace Rating 3
- Available in a range of colours

Suitable for...



Tennis Netball Football Hockey Basketball



# BOWL, TOSS, BAT, GOOGLY, DRIVE, PITCH, CRICKET SURFACES

We are unique in that we manufacture 3 different types of cricket surface to meet all club and county needs.

From our professional standard woven wicket to our school and training budget surfaces of needlepunch and tufted, our surfaces are distinctive and our viewpoint unbiased.

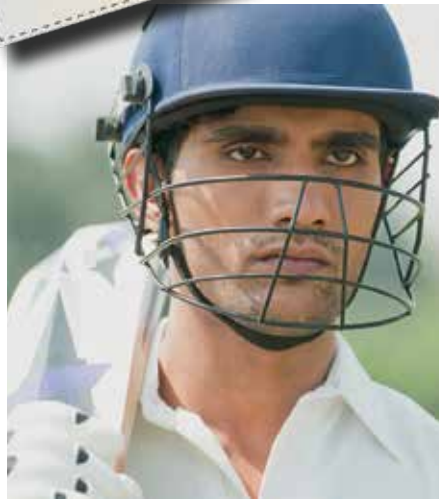
Our non-turf synthetic cricket wickets are used all over the world and are manufactured with some of the best fibres available.



Practice Play



Practice Play Junior



Tournament 10



Meeting all your club needs. Looking for the No.1 surface partner in cricket wickets? Then look no further than Playrite.

## Our expertise, your benefits

- Industry leading surfaces.
- Available in woven, tufted and needlepunch construction.
- Meeting all budgets.
- Over 20 years of producing the highest quality cricket surfaces.
- Products available: Practice Play, Practice Play Junior, Tournament 10.



Playsafe



Playsafe



Playsafe



Playsafe



Contact a member of our team

+44(0) 1924 412488

# RUN, SAFE, HOP, ROLL, SOFT SKIP. **PLAY SURFACES**

With systems suitable for all ages, there will be a PlaySafe system to suit all budgets and needs. Playsafe systems are completed with Matchwinner Velour, a low maintenance, sand dressed surface that is available in a range of 14 bright colours which, thanks to our laser cutting technology, can be custom designed to create fun and educational shapes and patterns including Hopscotch and snakes.

Playsafe offers an excellent alternative to natural grass, bark covered areas, wet pour and asphalt, providing a surface that is soft underfoot as well as being durable in any weather.



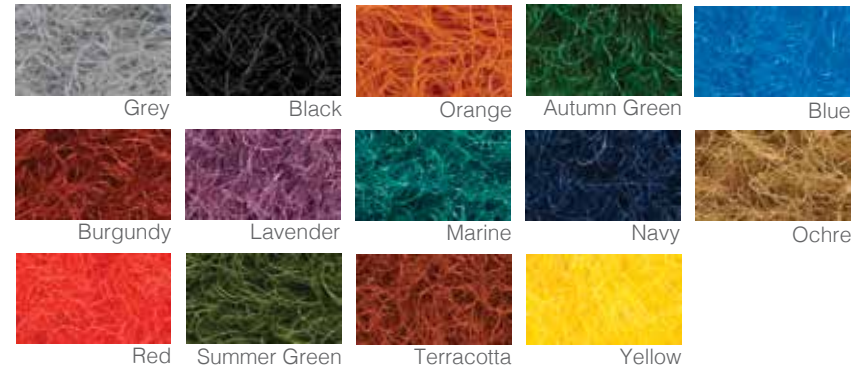
## Playsafe by Playrite

is a UK manufactured impact absorbing safety system.

### Our expertise, your benefits

- BS EN1177 standards for play.
- Meets BS7188 standards.
- 5 levels of critical fall height.
- Shapes can be incorporated.

### Available in 14 bright colours.







Thickness 52mm.  
Critical fall height  
**120cm**  
Top surface 17mm  
1 x shock absorbing  
layer 35mm

### Playsafe 12 System

- Critical fall height up to 120cm.
- Ideal for young children.
- Early years level.



Thickness 52mm.  
Critical fall height  
**170cm**  
Top surface 17mm  
1 x shock absorbing  
layer 35mm

### Playsafe 17 System

- Critical fall height up to 170cm.
- Ideal for younger children.
- Foundation level.



Thickness 62mm.  
Critical fall height  
**200cm**  
Top surface 17mm  
1 x shock absorbing  
layer 45mm

### Playsafe 20 System

- Critical fall height up to 200cm.
- A great mid-level safety surface.
- Key stage 1 (age 5-7).



Thickness 87mm.  
Critical fall height  
**270cm**  
Top surface 17mm  
1 x shock absorbing  
layer 35mm  
1 x shock absorbing  
layer 35mm

### Playsafe 27 System

- Critical fall height up to 270cm.
- Ideal for play equipment including swings and slides.
- Key stage 2 (age 8-11).



Thickness 97mm.  
Critical fall height  
**300cm**  
Top surface 17mm  
1 x shock absorbing  
layer 35mm  
1 x shock absorbing  
layer 45mm

### Playsafe 30 System

- Critical fall height up to 300cm.
- Ideal under higher climbing frames and tower units.
- Key stage 2 onwards.



# CLIMB, JUMP POP PLAYSAFE SYSTEMS

Our playground surfaces allow children to enjoy a bright, vibrant environment that's very safe to play in. A child's instinct is to climb and explore, which sometimes leads to a fall. With five levels of critical fall height and almost limitless design options, we can find the right playground surface for you.

Made from impact absorbing material, our systems cover critical falls from as low as 120cm all the way up to 300cm. The systems consist of the Matchwinner Velour top surface, accompanied underneath by a foam Schmitz pad to cushion the surface.

Being a sand-dressed, vandal resistant surface, Playsafe is the cleaner, safer and more durable alternative to most other playground options which also meets BS EN1177 and BS7188 standards.





# EDENHURST PREPARATORY SCHOOL CASE STUDY



There are so many things to consider when choosing a new synthetic sports surface. Durability, performance, maintenance; It can get confusing and becomes very easy to make a wrong decision. Playrite try to guide their customers in to choosing the best surface for their requirements, which is what we did when Head Teacher, Nick Copestick, contacted us to upgrade their tired macadam sports surface.

Mr Copestick is Head Teacher at Edenhurst Preparatory School, Newcastle Under Lyme, the school focus their main ethos on nurturing, inspiring and helping the students achieve. They want the best for the pupils and were very keen to introduce a new surface for their sporting requirements.

The surface needed to cover a wide variety of sports to be played on and yet low maintenance.

Our Matchplay 2 was the obvious choice although Mr Copestick required convincing by Rob Rhodes, a member of the Playrite team, who demonstrated the unique playing characteristics along with all the benefits that Matchplay 2 has to offer in a high level sports surface, including it's low maintenance appeal.

Our client was then introduced to Mr Copestick, who work along side Playrite on a number of projects, carrying out the installation through to completion in Autumn 2016.

Having received an update from the school, they confirmed the facility is being used on a daily basis and the new surface has added an extra dimension to the range of external facilities that they are now able to offer to the pupils. Matchplay 2 has been a great benefit in enhancing the schools outdoor play facilities.

One of Mr Copestick's influencing decisions was the fact he could source the surface from a UK manufacturer and knowing the installation team are so local and can be on hand at short notice.

Another great example of **MADE IN THE UK.**



# FREQUENTLY ASKED QUESTIONS



**Q: Is it a long process to export?**

**A:** The process of exporting comes in stages; it starts with the processing of the order, goes through to the production of the surface which then leads straight on to the quality checking to ensure the surface is the best quality for our customers. After the surface has passed the quality check it can then begin its journey overseas.

**Q: What do I need to consider when choosing a MUGA surface?**

**A:** What primary sports are to be played?  
What level of sport will be played?  
Is a low maintenance surface key to your decision?  
How often will the facility be used?

Playrite offer 7 surface options, all have unique preference and playing characteristics.

**Q: How long will my Playrite surface life expectancy be?**

**A:** Playrite offer a 5-year manufacturer's warranty for any defects found in your surface; you must realise the smaller the MUGA the more durable the surface you require. On average a well-used MUGA of an area around 700sqm should last approximately 7 years, whereby an area in excess of 3000sqm should last 10 years minimum.

**Q: Will I have to spend a lot on maintenance?**

**A:** Maintenance is an important part with any synthetic surface, not just to enhance the visual aspect of the surface, maintenance

plays a major part in offering consistent playing performance throughout its life span. Artificial surfaces are cheaper to maintain than natural grass pitches. You must consider the costs involved in providing equipment and labour to maintain your surface alternatively the cost to employ a company to carry out routine maintenance visits every month or quarterly again depending on the type of surface.

**Q: What if I am limited on budget?**

**A:** Everything is possible and ways of amending the specification can result in the client affording a synthetic surface, needlepunch surfaces offer additional stability and therefore a compacted stone base with a shockpad would allow for a MUGA surface. Playrite work with numerous consultants who specialise in the design of dynamic sports bases.

**Q: Will I be able to use my surface in all seasons?**

**A:** Our needlepunch surfaces are all weather and can be used all year round. Needlepunch is the most durable and will drain faster than a conventional tufted surface. It is not recommended to remove snow from the surface however generally a synthetic surface will thaw quicker than hard surfaces such as tarmac.



View our video? [www.playrite.co.uk](http://www.playrite.co.uk)

To discover more please contact:

**Playrite Synthetic Surfaces**

Wellington Mills, Liversedge, West Yorkshire, WF15 7FH, United Kingdom

**Tel:** +44(0)1924 412488 | **Email:** [info@playrite.co.uk](mailto:info@playrite.co.uk) | **www.playrite.co.uk**

